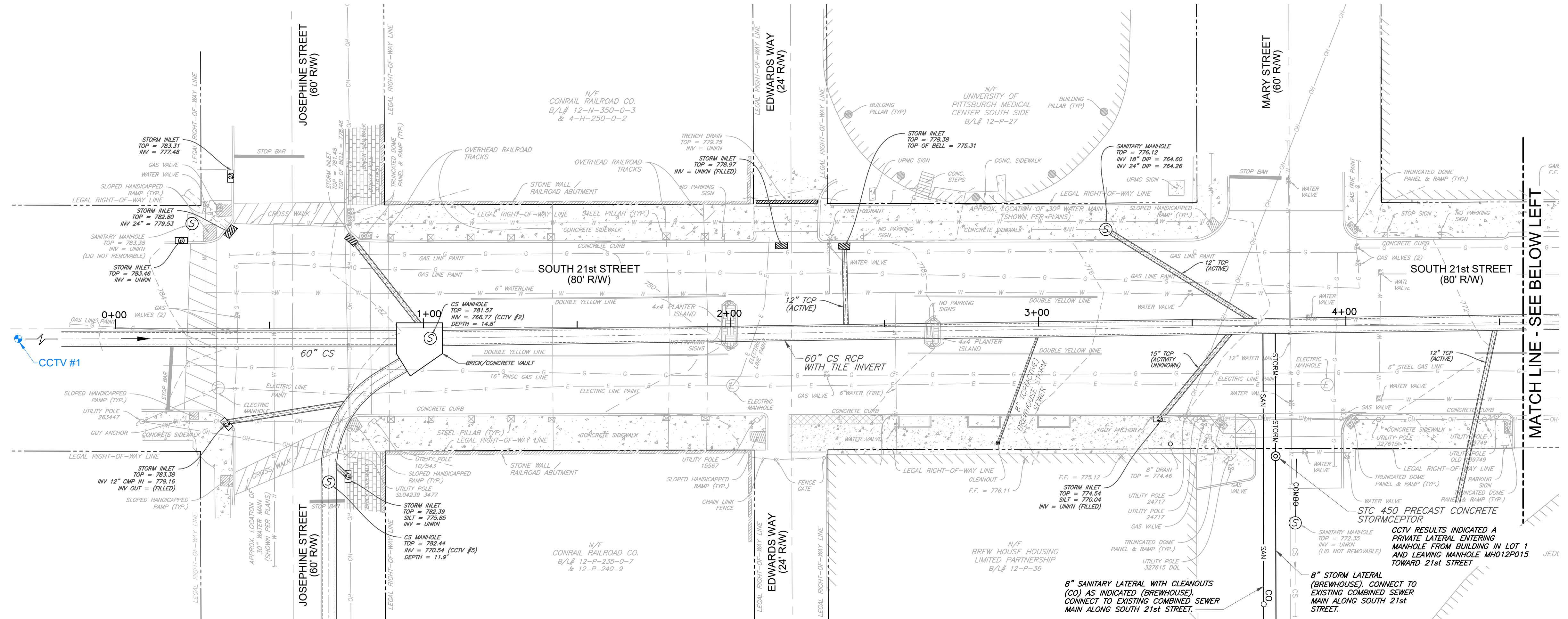


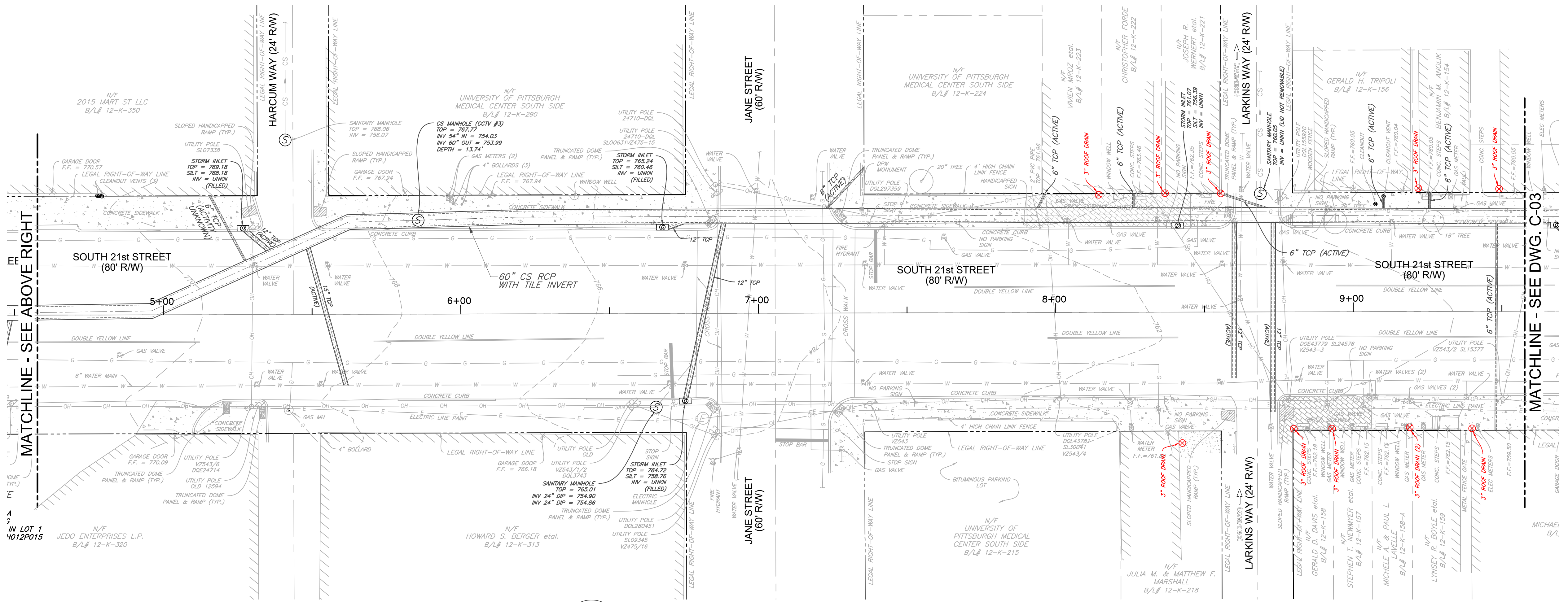
GENERAL NOTES:

1. PVES FIELD SURVEYS PERFORMED 2/29/16 - 3/07/16.
2. HORIZONTAL CONTROL SHOWN HEREON IS PENNSYLVANIA SOUTH STATE PLANE NAD 83. VERTICAL CONTROL IS NAVD 88.
3. THE UNDERGROUND UTILITIES SHOWN ON THIS SURVEY HAVE BEEN COMPILED FROM FIELD SURVEY INFORMATION, LIMITED PA ONE-CALL MARKINGS PROVIDED BY THE UTILITY COMPANIES AND EXISTING DRAWINGS OBTAINED FROM THE UTILITY COMPANIES. THE SURVEYOR HAS CONTACTED & REQUESTED FURTHER MAPS & INFORMATION FROM P.W.S.A. IN OUR DILIGENT EFFORT TO RESOLVE ANY QUESTIONS OR OFFER THE BEST AVAILABLE INFORMATION. TO DATE, NO FURTHER INFORMATION HAS BEEN OBTAINED FROM P.W.S.A. THE SURVEYOR MAKES NO GUARANTEE THAT THE UNDERGROUND UTILITIES SHOWN COMPRISE ALL SUCH UTILITIES IN THE AREA, EITHER IN SERVICE OR ABANDONED. ALTHOUGH HE DOES CERTIFY THAT THEY ARE LOCATED AS ACCURATELY AS POSSIBLE FROM AVAILABLE INFORMATION. ALL UTILITIES SHOULD BE VERIFIED BY THE CONTRACTOR PRIOR TO ANY/ALL CONSTRUCTION PROJECTS. PLEASE BE AWARE THAT MANY OF THE STORM SEWER INLETS WERE CLOGGED & FILLED WITH DEBRIS DURING PVES SURVEYS, AND CERTAIN SANITARY MANHOLE LIDS COULD NOT BE OPENED DUE TO CORROSION, ETC.



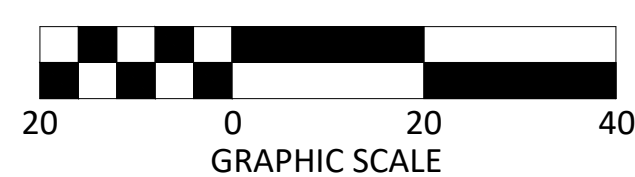
LEGEND:

- GUY WIRE
- FENCE LINE
- U/G ELECTRIC
- U/G COMM
- PROPERTY ADJOINER
- SUBJECT PROPERTY
- PROPERTY EASEMENT
- ROAD CENTERLINE
- ROAD LEGAL R/W
- MAJOR CONTOUR
- MINOR CONTOUR
- OVERHEAD LINES
- GAS UTILITY
- SAN-STM COMBO UTILITY
- SANITARY UTILITY
- STORM UTILITY
- WATER UTILITY
- ELECTRIC UTILITY
- COMM UTILITY
- BOLLARD
- CATCH BASIN
- COMMUNICATION MANHOLE
- ELECTRIC METER
- ELECTRIC MANHOLE
- FIRE HYDRANT
- GAS VALVE
- GUY ANCHOR
- GUY POLE
- LIGHT POLE
- MANHOLE UNKNOWN
- CONCRETE
- ASPHALT PAVING
- BRICK
- BUILDING
- SANITARY CLEAN OUT
- SANITARY MANHOLE
- SIDEWALK STORM INLET
- SINGLE POST SIGN
- TRAFFIC LIGHT
- DECIDUOUS TREES
- UTILITY POLE
- WATER METER
- WATER MANHOLE
- WATER VALVE



PLAN VIEW

SCALE: 1" = 20'



Prepared For:
WESTERN PENNSYLVANIA CONSERVANCY

GROUNDWORK / CIVIL
ENGINEERING + DESIGN
42 Newgate Road
Pittsburgh, PA 15202
Phone: (412) 297-6401
CONTACT: Art Gazdik - artgazdik@groundworkcivil.net

SOUTH 21st STREET
16th & 17th Ward, City of Pittsburgh, Allegheny Co. Pa
EXISTING CONDITIONS (SHEET 1 of 2)
Project No.:
Drawing No.:
Scale: AS NOTED
Date: 10/16/2016

REV. No.	DATE	BY	DESCRIPTION
APPV			

Know what's below.
Call before you dig.
POCS SER. # 20160711172

THE LOCATIONS OF EXISTING UNDERGROUND UTILITIES ARE SHOWN IN AN APPROXIMATE MANNER. THE CONTRACTOR SHALL DETERMINE THE EXACT LOCATION OF ALL UTILITIES PRIOR TO ANY CONSTRUCTION. THE CONTRACTOR SHALL BE RESPONSIBLE FOR ANY AND ALL DAMAGES WHICH MAY BE OCCASIONED BY THE CONTRACTOR'S FAILURE TO EXACTLY LOCATE AND PRESERVE ANY AND ALL UNDERGROUND UTILITIES.

